

30  
YEARS OF EXCELLENCE

[www.hydropackindia.com](http://www.hydropackindia.com)



**hydropack (India) pvt. ltd.**

BELGAUM - INDIA

Hydraulic Presses ☐

Hydraulic Cylinders ☐

Hydraulic Jacks ☐

Power Packs ☐

Special Purpose Machines ☐

**GIVE YOUR INDUSTRY A HYDROLIFT ...**



ISO 9001:2015  
ISO / TS 22163

CE **IRIS**  
Certification

# INDEX

Index .....	1	Pan Cake / Low Height / Flat Jacks : HH / HF Series .....	29-30
Our Profile .....	2	Hydraulic Bolt / Stud Tensioner .....	31-32
Rewards / Certificates .....	3	Hand Pumps & Power Packs .....	33-34
Strategic Vision & Mission .....	4	Hydraulic Aligners .....	35-36
Unit - 1 & Unit - 2 .....	5-6	Hydraulic Cylinders .....	37-38
Hydropack Established & Infrastructure .....	7-8	Hydropack's Special Purpose Machines for .....	39-40
'H' Frame / Workshop type press : HWP Series .....	9-10	Indian Railways & Metros	
Throat type / Gap Frame / 'C' type press : HCP Series .....	11-12	Hydropack's Special Purpose Machines for Construction .....	41-42
Closed Frame Presses : HCF Series .....	13-14	Developments & Transcendence .....	43
Moulding Press : HMP Series .....	15-16	Hydropack's outstanding execution, passionate work & .....	44
Pillar type / Tie Rod frame press : HFP Series .....	17-18	constant innovation for new results.	
Coil Curing Press : HCCP Series .....	19-20	Developments & Transcendence .....	45
Spring Return Light Weight Jacks : HLP Series .....	21-22	Hydraupack,s State of the Art Machining Facility .....	46
Spring Return Light Weight Jacks : HLT Series .....	23-24	Other Products .....	47-48
Double Acting Light Weight Jacks : HLD Series .....	25-26	Performance & Credentials .....	49
Hollow Plunger / Center Hole Jacks : HRC/HDC Series .....	27-28	Our Major Clients .....	50



# 1989

## Hydropack

### Established



**Mr. Sudhir Darekar**  
Managing Director

#### OUR PROFILE

1989 was a year of starting a new Era in the field of Quality Hydraulics. Now famous Hydropack was established by a group of young technocrats who were rich by experience and knowledge in the field. Today it has grown into India's foremost hydraulic equipment manufacturing company "HYDROPACK (INDIA) PVT. LTD."

Success is not a one man show. Hydropack has always been driven by the needs of our customers & this has formed the foundation of our business mode, by focusing our resources on providing quality products and unmatched service & support. We offer our customers a level of value they cannot find anywhere else.

Hydropack have a speciality of innovative designing and with help of designing aids like Catia, Solidworks, CAD and special designed hydraulic testing facilities we deliver. Hydropack have a wide range of applications and we know that, our products will be used as equipment's for diverse field like, Automobile, Nuclear Power, Ship Building, Construction, Mining, Spaces, Aircrafts Power Generation, Railways etc. & over the last months, years, decades we have worked ceaselessly to develop the excellent products for our valued customer & we enjoy the reputation.

In today's highly competitive market place, companies, must find ways to differentiate themselves if they are to maintain an economic advantage, and offering superior customer service can be provide a distinct edge.

The products manufactured are not only as per standard designs and requirement but it is " Total Hydraulic Solution" for any type of industry and for any application. What works today, though, may not work tomorrow. The industry and the world are continually changing and it is evident that we must draw fresh perspectives from the knowledge and information around us if we are to adapt to that change. The next important step is to share that knowledge. It is the only ways to bring together the successful achievers of today with the innovative ground breakers of tomorrow.

Now, we convey the confidence to our supportive customers, and help them realise their dreams by offering safe and reliable products as well as punctual and effective service !

## REWARDS / CERTIFICATE



KASSIA Best Entrepreneur Award 2011-12





After serving for more than three decades to the Indian Engineering Industry:

### **VISION:**

To be the most respected & successful enterprises, committed to total customer satisfaction through wide range of hydraulic products & customised solutions. With the best technology & innovations we shall evolve globally as a value creator for our customers through continuous learning & improving & meeting their expectations.

### **MISSION:**

While caring for society, environment & social responsibility we shall deliver the best to our customers & provide total hydraulic solutions. We shall install the core values of excellence, freedom, integrity, respect & harmony. We will build an ideal organization on the above lines by ensuring our employees total commitment & loyalty by providing their own welfare & full scope for unleashing their creativity.



"Our Mission is  
Your Satisfaction"

## UNIT - 1







# 1989

## Hydropack

Established



Research & Development Centre, Engineering & Design department, Records & documentation Department, Full fledge machine shop. A one stop for all hydraulic needs under one roof. Our unit-1 is having facility for manufacturing quality hydraulic equipments to meet the global standards. We have in house facility of raw material storage, machining, grinding, drilling. Honing, Heavy fabrication and precision machining facilities etc. Equipments & Test rigs to test our products for performance prior to dispatch to customer.



# 2011

## Hydropack Infrastructure



In the year 2011, Hydropack established its State of the Art manufacturing facility in the new premises which consist of Heavy Fabrication Setup, Test rig upto 1000T, heavy duty lathe machine with Over head crane of 25T capacity. Sound set up of Hydraulic Cylinder manufacturing, assembly & testing.





## MORE RUGGED

Hydropack make powerful performance workshop type presses are used for applications such as straightening, pressfitting, bending, forming, punching, assembling, dismantling, etc. These multipurpose presses are popular in general workshops and automobile service centers. Presses can be operated either with manual hand pump or with power pack. These are with adjustable

### BENEFITS / FEATURES

- Heavy Duty construction.
- Moveable work table.
- Large Daylight.
- Hydraulic return concept.
- Operated manually or with separate Power Pack



Capacity : 10 to 200 Tons

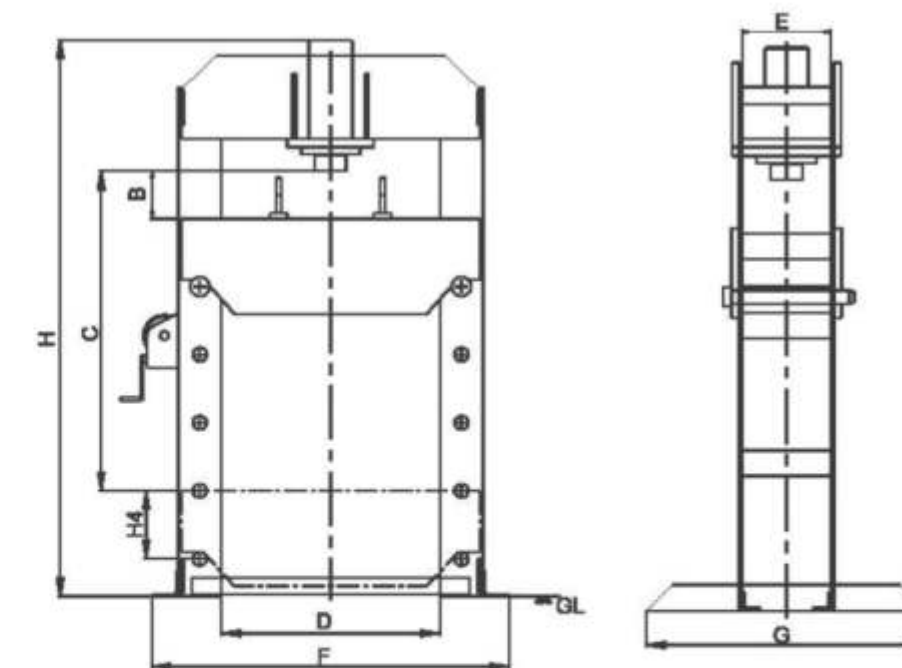
Stroke : 125 to 600 mm

Day Light : From 100 to 2000 mm



## HWP SERIES

MODEL NO.	UNIT	HWP10	HWP20	HWP30	HWP40	HWP50	HWP100	HWP150	HWP200
<b>TECHNICAL SPECIFICATIONS</b>									
Capacity	Tonnes	10	20	30	40	50	100	150	200
Working Pressure	kg/cm <sup>2</sup>	315	315	315	315	315	315	480	315
Stroke	'A' mm	125	150	180	180	180	250	300	300
Minimum Day Light	'B' mm	100	125	150	150	150	150	260	260
Maximum Day Light	'C' mm	1100	1100	1150	1200	1200	1500	1500	1500
Width Between Columns	'D' mm	550	650	700	750	850	1000	1000	1000
Depth Between Columns	'E' mm	150	200	200	250	250	275	410	450
Number of Adjustments		5	5	5	5	5	5	5	5
Over All size Apprx.	'F' mm	800	900	1000	1050	1150	1400	1600	1600
	'G' mm	600	600	600	800	800	800	1000	1000
	'H' mm	1950	1950	2100	2200	2400	2750	2800	3300
Approx. Weight	kg.	230	300	425	575	650	1500	3500	2500



- The specifications may be altered as per individual needs.
- Repair kits & seal are available for all models.
- Subject to change without notice.



## THROAT / GAP FRAME / 'C' TYPE PRESS : HCP SERIES

# MULTI FUNCTIONAL

These Presses can be used in various applications like Pressing, Bending, Straightening, Punching, Broaching, Reveting etc. These can be used in Production or Maintenance. These presses are used in workshop and for Automotive assembly lines.

These types are used for Press fitting, Forming, Assembling, Dismantling of Brushes and Bearings etc.

Operated with hand pump or Power packs with PLC and load cell.

### BENEFITS / FEATURES

- Heavy Duty construction.
- Rigid Frame under full load.
- Operated built in or with separate Power Pack through push button or foot switch.



Capacity : 6.3 to 100 Tons

Day Light : From 150 to 800 mm

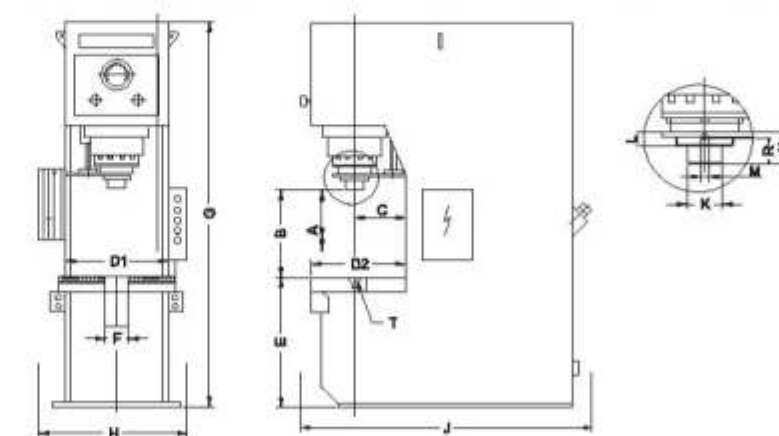
Table Size : From 300 X 300 to 800 X 1000 mm



- The specifications may be altered as per individual needs.
- Repair kits & seal are available for all models.
- Subject to change without notice.

## HCP SERIES

MODEL NO.	UNIT	HCP6	HCP10	HCP16	HCP25	HCP40	HCP63	HCP100
<b>TECHNICAL SPECIFICATIONS</b>								
Forward Capacity	Tonnes	6.3	10	16	25	40	63	100
Ram Stroke	'A' mm	315	315	315	400	400	400	500
Day Light	'B' mm	500	500	500	630	630	630	800
Throat	'C' mm	175	175	200	225	250	275	300
Table Size	'D1' mm	400	400	450	500	550	600	700
	'D2' mm	350	350	400	450	550	550	600
Table ht from G.L.	'E' mm	750	750	750	750	750	750	750
'U' cut out in Table	'F' mm	100	100	120	120	140	140	160
T - Slot	'T' mm	T12	T12	T14	T14	T18	T18	T22
Ram End Threading	'K' mm	M 48x2	M 48x2	M 56x2	M 72x2	M 90x3	M 125x3	M 160x3
Threading Length	'L' mm	30	30	35	45	45	45	50
Location in Ram	'M' mm	16	16	20	25	32	40	50
DP of Location	'N' mm	35	35	40	40	45	50	50
Grub Screw Size	'P' mm	M8	M8	M8	M8	M10	M12	M12
Grub Sw Dist from Ram End	'R' mm	20	20	20	20	25	25	25
<b>Overall Size (approx)</b>								
Height	'G' mm	2040	4040	2080	2340	2420	2500	2850
Width	'H' mm	635	635	690	700	800	830	900
Depth	'J' mm	1175	1300	1380	1460	1590	1780	2000
<b>Functional Specifications</b>								
Approach Speed	mm/sec	19	14	20	18	80	55	48
Pressing Speed	mm/sec	12	8	13	11	12	9	8
Return Speed	mm/sec	32	22	36	30	135	100	85
Ele. Motor Capacity	kW	2.2	2.2	3.7	3.7	7.5	9.3	11
Oil Tank Capacity	Ltrs.	100	100	150	150	250	400	400







## CLOSED FRAME PRESSES : HCF SERIES

# HIGH STABILITY

Closed Frame Presses are generally used for Blanking, Compacting, Moulding, Embossing, Punching, Deep Drawing, Coining, Forming and other general applications. These can be operated either manually or with push buttons.

### BENEFITS / FEATURES

- Rigid frame under full load.
- Large Daylight.
- Heavy Duty construction.
- Die cushion cylinder provided for special cushioning effect.
- Operated with separate Power pack through Push button or manually.



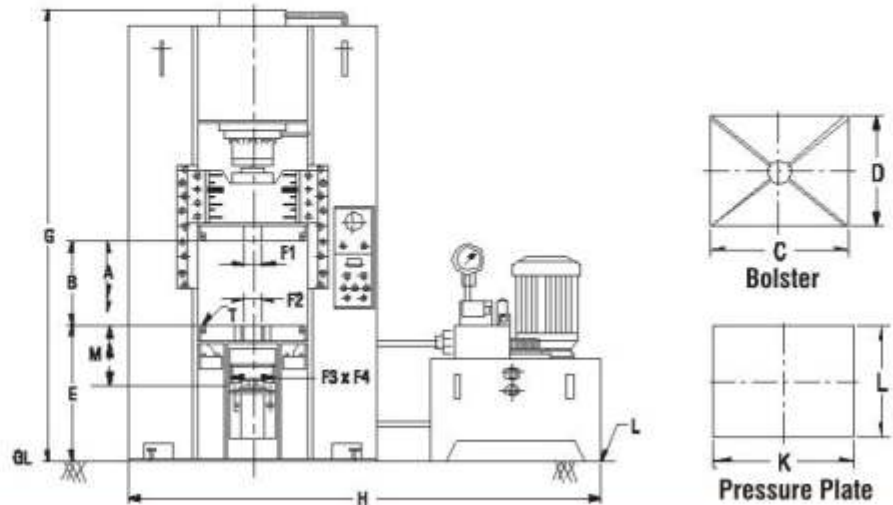
**Capacity :** 25 to 1000 Ton  
**Stroke :** 200 to 1000 mm  
**Day Light :** 300 to 1200 mm  
**Table Size :** 300 X 300 to 2500 X 2500 mm



- The specifications may be altered as per individual needs.
- Repair kits & seal are available for all models.
- Subject to change without notice.

## HCF SERIES

TECHNICAL SPECIFICATIONS								
MODEL NO.		HCF40	HCF63	HCF100	HCF160	HCF200	HCF250	HCF315
Main Ram Capacity		40	63	100	160	200	250	315
Die Cushion Ram		16	25	40	50	63	100	
DIMENSIONAL SPECIFICATIONS								
Main Ram Stroke	'A' mm	400			500			630
Day Light	'B' mm	630			800			1000
Table Size	'C' mm	630		800			1000	
	'D' mm	630		800			1000	
Table height from G.L.	'E' mm	800		900			1000	
Location Bore In Main Table	'F1' mm				50 H7			
Location Bore In Ram Table	'F2' mm	100 H7		125 H7			140 H7	
T - slot (Is : 2013-h 12)	'T' mm	T 18		T 22			T 28	
Die Cushion Table Size	'K' mm	400		500			630	
	'L' mm	400		500			630	
Die Cushion Ram Stroke	'M' mm	160				200		
OVERALL DIMENSIONS (APPROX.)								
Height	'G' mm	2800	3080	3410	3750	2950	4160	4200
Width	'H' mm	2320	2380	2900		2710		2990
Depth	'J' mm	1400		1400			1670	
Functional Specifications								
Approach Speed	mm/sec	110	92	61	44	51		50
Pressing Speed	mm/sec	11	10	7.5	4.8	4.8	6.5	5.3
Return Speed	mm/sec	173	164	108	144	166	131	117
Ele. Motor Capacity	kW	7.5	11		15			30
Oil Tank Capacity	Ltrs.	400	500				750	







## MOULDING PRESS : HMP SERIES

# SOPHISTICATED TECHNOLOGY

These presses are of Closed Frame Type or Four Pillar Type. These presses are generally used for moulding automobile rubber components, Rubber Seals, V belts, Conveyor belt making, flap moulding plastic, Bakelite panels, wood, plywood & Board finishing etc. These moulding presses include compression / transfer moulding & automatic 4 plate mould opening with sliding table. It has a range up to 1500 tones with programmable logic control system with digital presses with vacuum type compression moulding. The specifications may be altered as per individual needs.

## BENEFITS / FEATURES

- Suitable for bakelite / Rubber Plastic / FRP moulding, etc..
- Available in innovative designs.
- As per with global quality standards.
- Precision & Mass production combined & can work non stop 24 X 7 shifts.



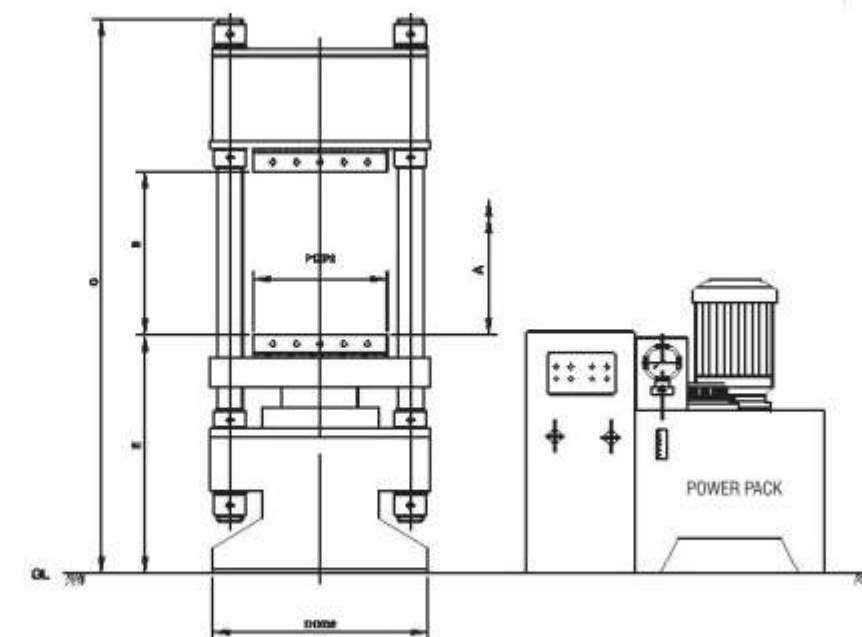
**Capacity :** 10 to 500 Tons  
**Stroke :** 150 to 600 mm  
**Day Light :** 300 to 1200 mm  
**Platen Size :** From 300 X 300 to 1200 X 1200 mm



- The specifications may be altered as per individual needs.
- Repair kits & seal are available for all models.
- Subject to change without notice.

## HMP SERIES

MODEL NO.	UNIT	HMP300	HMP350	HMP400	HMP560	HMP900	HMP1000
<b>TECHNICAL SPECIFICATIONS</b>							
Platen Size	'P1' mm	300	350	400	560	900	1000
	'P2' mm	300	350	400	560	900	1000
Capacity	Tonnes	40	75	100	150	300	500
<b>DIMENSIONAL SPECIFICATIONS</b>							
Ram Stroke	'A' mm	100	400	250	150	500	200
Day Light	'B' mm	150	255	300	200	700	205
Table Height form G.I.	'E' mm	750	1200	750	950	1100	1000
<b>Overall Dimensions (Approx.)</b>							
Height	'G' mm		1900	1400	1650	3000	1750
Length	'D1' mm		950	800	900	1700	1700
Width	'D2' mm		350	400	600	1220	1300
<b>FUNCTIONAL SPECIFICATIONS</b>							
Approach Speed	mm/sec	20	30	28	77	13.5	60
Pressing Speed	mm/sec	4	2.6	5	1.5	0.7	1
Return Speed	mm/sec	50	60		136		
Motor Capacity	HP	7.5	5	5	7.5	12.5	5
Oil Tank Capacity	Litres	250	250	250	350	500	350
Mode of Heating	Electric / Steam						







## PILLAR TYPE / TIE ROD FRAME PRESS : HFP SERIES

# SCALING NEW HEIGHTS

Four Pillar type Presses are generally used for Blanking, Embossing, Moulding, Punching, Deep Drawing, Coining, Forming and other applications. These can be operated either manually or with push buttons. The specifications may altered as per individual

### BENEFITS / FEATURES

- Large Daylight
- Heavy Duty Construction
- Rigid Frame under full load.
- Die cushion cylinder provided for special cushioning effect.
- Operated with separate Power Pack through Push button or manually.



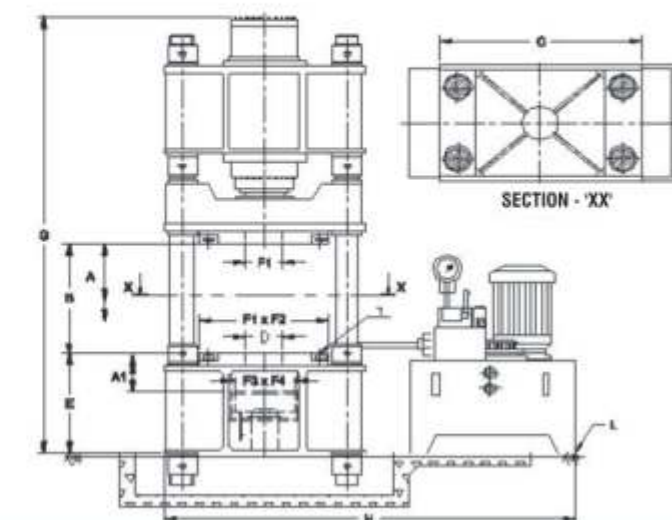
**Capacity :** 25 to 1000 Tons  
**Stroke :** 200 to 1000 mm  
**Day Light :** 300 to 1200 mm  
**Platen Size :** From 300 X 300 to 2500 X 2500 mm



- The specifications may be altered as per individual needs.
- Repair kits & seal are available for all models.
- Subject to change without notice.

## HFP SERIES

TECHNICAL SPECIFICATIONS									
MODEL NO.		HFP 25	HFP 40	HFP 63	HFP 100	HFP 160	HFP 200	HFP 250	HFP 315
Forward Capacity	(Tonnes)	25	40	63	100	160	200	250	315
DIMENSIONAL SPECIFICATIONS									
Ram Stroke	'A1' mm	400				500			630
Day Light	'B' mm	630				800			1000
Table Size	'C' mm		630		800			1000	
	'D' mm		630		800			1000	
Table Height From G.I.	'E' mm	800					900		
Location Bore in Main Table	'F1' mm	100 H7			125 H7			140H7	
Location Bore in Ram Table	'F2' mm	100 H7			125 H7			140 H7	
T-Slot (Is:2013-h 12)	'T' mm	T18			T22			T28	
Die Cushion Ram Capacity	(Tonnes)		16	25	40	63	63	100	100
Die Cushion Ram Stroke	'A1' mm		160	160	200	200	200	200	200
Die Cushion Table Size	'F3XF4' mm		400X400	400X400	500X500	500X500	630X630	630X630	800X800
OVERALL DIMENSIONS (APPROX.)									
Height	'G' mm	2600	2750	3100	3400	3600	3700	3850	4200
Width	'H' mm	1950	2000	2100	2300	2500	2700		2800
Depth	'J' mm	980	1250	1450			1650		
FUNCTIONAL SPECIFICATIONS									
Approach Speed	mm/sec	104	110	92	61	44	51		50
Pressing Speed	mm/sec	15	11	10	7.5	4.8	4.8	6.5	5.3
Return Speed	mm/sec	185	173	164	108	144	166	131	117
Electric Motor Capacity	kW	5.5	7.5	11		15		30	
Oil Tank Capacity	Litres	250	400	500			750		





## INNOVATION AT ITS BEST

Major Electrical / Stator / Rotor & Coil manufacturers in India & abroad prefer HYDROPACK make Coil Curing Press / Machine because of our proven track record of quality & reliability for over 30 years. The Coil Curing Press is conceptualised to manufacture diamond pulled stator coil & bars of Hydro generators & other large electrical machine for consolidation of insulation.

The equipment has been designed to make the work easy for various sizes & types of coils. The Coil Curing press comes with vertical & horizontal pressing heads in combination of 4, 6, 8, 12, 16 heads etc. as per length of the coils. For precise moulding & curing with closed loop pressure applied from vertical as well as horizontal directions to get accurate sizes with heating & cooling systems.

### BENEFITS / FEATURES

- Large Daylight
- Heavy Duty Construction
- Rigid Frame under full load.
- Die cushion cylinder provided for special cushioning effect.
- Operated with separate Power Pack through Push button or manually.



### General Specifications

Multiple Pressing Heads	: 4, 6, 8, 12
Horizontal force per head	: 12, 24, 30
Vertical force	: 8, 12, 24
Heating Platen size	: Customer to specify
Minimum Coil length	: 300 mm.
Maximum Coil length	: 6000 mm.
Open box section	: 100 mm.
Maximum Coil Section	: 40 X 125
Maximum curing temperature	: 200°C





## HIGH EFFICIENT

Hydropack India offer this HLP series jacks designed for power and portability. These jacks are made of special light weight material having more strength to get better ratio compared to the other jacks. The added light weight feature of the jack helps for easy positioning due to its less self weight which is an added advantage for jacking applications in the area's of maintenance, constructions sites, shipyards, steel plants, refineries and power plants, Railways etc. These jacks are single acting spring return in construction. The ram is hard chrome plated. These are designed for working pressure upto 700 kg/cm<sup>2</sup>. Quick-change couplers provided. Usually these jacks are operated with a separate hand pump & high-pressure flexible hosepipe either NPT or BSP end fittings. Pressure gauges are optional. However these jacks can also be operated with Power packs.

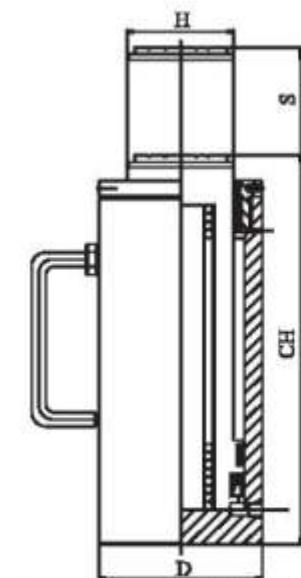
### BENEFITS / FEATURES

- Single Acting Operation
- Rated to full capacity.
- Quick Change Couplings provided.
- Pass through static & Dynamic tests.
- Available in custom strokes.
- Ram chrome plated to resist scoring & corrosion.
- Spring return, Light weight construction.

Capacity : 10 to 1500 Tons

Stroke : 150 mm

Working Pressure : 700 kg/cm<sup>2</sup>



HLP - Series Light Weight Jacks

### HLP SERIES

Cap. Ton	Model	Stroke (S) ± 5mm	Eff Area cm.sq	Oil. Cap CC	Closed Height (CH) ± 5mm	BODY DIA (D) ± 5mm	Ram Dia (H) mm	Approx. Weight in Kgs.	Hand Pump
10	HLP-10/100	100	15.80	159	220	60	36	4.5	HP-12/1
	HLP-10/150	150		238	270			5.5	
	HLP-10/200	200		318	320			6.5	
20	HLP-20/100	100	35.23	352	220	95	56	7.5	HP-12/1
	HLP-20/150	150		528	270			10	
	HLP-20/200	200		705	320			12.5	
30	HLP-30/100	100	44.15	442	220	100	56	12	HP-12/3
	HLP-30/150	150		662	270			15	
	HLP-30/200	200		883	320			18	
50	HLP-50/100	100	78.50	785	230	130	86	19	HP-5012/5
	HLP-50/150	150		1176	280			24	
	HLP-50/200	200		1570	330			29	
75	HLP-75/100	100	113.04	1130	230	150	90	28	HP-5012/5
	HLP-75/150	150		1696	280			35	
	HLP-75/200	200		2261	330			42	
100	HLP-100/100	100	153.86	1539	230	175	100	34	HP-5012/5
	HLP-100/150	150		2308	280			43	
	HLP-100/200	200		3077	330			52	
150	HLP-150/100	100	226.86	2270	250	215	150	56	HP-5012/5
	HLP-150/150	150		3403	300			70	HP-5012/5
	HLP-150/200	200		4538	350			84	HP-5012/13
200	HLP-200/100	100	314.00	3140	250	250	180	80	HP-5012/13
	HLP-200/150	150		4710	300			100	
	HLP-200/200	200		6280	350			119	
250	HLP-250/100	100	380.00	3800	300	285	180	140	HP-5012/13
	HLP-250/150	150		5700	350			160	
	HLP-250/200	200		7600	400			180	
300	HLP-300/100	100	452.39	4524	315	310	200	170	HP-5012/13
	HLP-300/150	150		6785	365			195	
	HLP-300/200	200		9047	415			220	
400	HLP-400/100	100	572.55	5725	360	350	250	260	HP-5012/13
	HLP-400/150	150		8590	410			290	
	HLP-400/200	200		11451	460			320	
500	HLP-500/100	100	706.86	7070	390	400	280	380	HP-5012/13
	HLP-500/150	150		10503	440			425	HP-5012/20
	HLP-500/200	200		14137	490			470	HP-5012/20
600	HLP-600/100	100	855.30	8553	390	430	280	420	HP-5012/13
	HLP-600/150	150		12830	440			480	HP-5012/20
	HLP-600/200	200		17106	490			530	HP-5012/25
800	HLP-800/100	100	1134.11	11341	430	510	320	665	HP-5012/20
	HLP-800/150	150		17010	480			730	HP-5012/25
	HLP-800/200	200		22682	530			800	HP-5012/30
1000	HLP-1000/100	100	1452.20	14522	400	560	380	845	HP-5012/25
	HLP-1000/150	150		21783	500			930	HP-5012/30
	HLP-1000/200	200		29044	600			1015	HP-5012/40
1500	HLP-1500/100	100	2206.00	22062	525	700	450	1540	HP-5012/30
	HLP-1500/150	150		33093	575			1665	HP-5012/40
	HLP-1500/200	200		44124	625			1790	HP-5012/50



## SAFE & RELIABLE

Hydropack India offer this HLT series jacks designed for power and portability. These jacks are made of special light weight material having more strength to get better ratio compared to the other jacks. The added light weight feature of the jack helps for easy positioning due to its less self weight which is an added advantage for jacking applications in the area's of maintenance, constructions sites, shipyards, steel plants, refineries and power plants, Railways etc. These jacks are single acting spring return in construction. These are designed for working pressure upto 700 kg/cm<sup>2</sup>. Quick-change couplers provided. Usually these jacks are operated with a separate hand pump & high-pressure flexible hosepipe either NPT or BSP end fittings. Pressure gauges are optional. However these jacks can also be operated with Power packs.

### BENEFITS / FEATURES

- Single Acting Operation
- Rated to full capacity.
- Quick Change Couplings provided.
- Pass through static & Dynamic tests.
- Available in custom strokes.
- Spring return, Light weight construction.
- Threaded Ram with safety locknut.

Capacity : 10 to 1500 Tons

Stroke : 150 mm

Working Pressure : 700 kg/cm<sup>2</sup>



HLP - Series Light Weight Jacks



## HLP SERIES

Cap. Ton	Model	Stroke (S) ± 5mm	Eff Area cm.sq	Oil. Cap CC	Closed Height (CH) ± 5mm	BODY DIA (D) ± 5mm	Ram Dia (H) mm	Approx. Weight in Kgs.	Hand Pump
10	HLT-10/100	100	15.80	159	250	60	40	5	HP-12/1
	HLT-10/150	150		238	300			6	
	HLT-10/200	200		318	350			7	
20	HLT-20/100	100	35.23	352	250	95	56	8.8	HP-12/1
	HLT-20/150	150		528	300			11.3	
	HLT-20/200	200		705	350			13.8	
30	HLT-30/100	100	44.15	442	250	100	63	14	HP-12/3
	HLT-30/150	150		662	300			17	
	HLT-30/200	200		883	350			20	
50	HLT-50/100	100	78.50	785	270	130	86	23	HP-5012/5
	HLT-50/150	150		1176	320			28	
	HLT-50/200	200		1570	370			33	
75	HLT-75/100	100	113.04	1130	275	150	90	34	HP-5012/5
	HLT-75/150	150		1696	325			41	
	HLT-75/200	200		2261	375			48	
100	HLT-100/100	100	153.86	1539	275	175	120	42	HP-5012/5
	HLT-100/150	150		2308	325			51	
	HLT-100/200	200		3077	375			60	
150	HLT-150/100	100	226.86	2270	300	215	150	65	HP-5012/5
	HLT-150/150	150		3403	350			79	HP-5012/5
	HLT-150/200	200		4538	400			93	HP-5012/13
200	HLT-200/100	100	314.00	3140	300	250	180	90	HP-5012/13
	HLT-200/150	150		4710	350			10	
	HLT-200/200	200		6280	400			29	
250	HLT-250/100	100	380.00	3800	350	285	180	165	HP-5012/13
	HLT-250/150	150		5700	400			185	
	HLT-250/200	200		7600	450			205	
300	HLT-300/100	100	452.39	4524	375	310	200	210	HP-5012/13
	HLT-300/150	150		6785	425			235	
	HLT-300/200	200		9047	475			285	
400	HLT-400/100	100	572.55	5725	440	350	250	320	HP-5012/13
	HLT-400/150	150		8590	490			350	
	HLT-400/200	200		11451	550			380	
500	HLT-500/100	100	706.86	7070	470	400	280	455	HP-5012/13
	HLT-500/150	150		10503	520			500	HP-5012/20
	HLT-500/200	200		14137	570			545	HP-5012/20
600	HLT-600/100	100	855.30	8553	470	430	280	520	HP-5012/13
	HLT-600/150	150		12830	520			565	HP-5012/20
	HLT-600/200	200		17106	570			615	HP-5012/25
800	HLT-800/100	100	1134.11	11341	530	510	320	825	HP-5012/25
	HLT-800/150	150		17010	580			890	HP-5012/25
	HLT-800/200	200		22682	630			955	HP-5012/30
1000	HLT-1000/100	100	1452.20	14522	560	560	380	1055	HP-5012/25
	HLT-1000/150	150		21783	610			1140	HP-5012/30
	HLT-1000/200	200		29044	660			1225	HP-5012/40
1500	HLT-1500/100	100	2206.00	22062	665	700	450	1965	HP-5012/30
	HLT-1500/150	150		33093	715			2090	HP-5012/40
	HLT-1500/200	200		44124	765			2215	HP-5012/50



## OPTIMUM PERFORMANCE

Hydropack India offer this HLD series Double Acting jacks rugged in construction specially designed for high strength, safety, reliability & light in weight. This double acting design is ideal for developing force in forward and retraction, thus permitting fast & controlled retraction for continuous duty cycles.

These jacks can be supplied with extra flangers on the front or on base for easy mounting & fixturing. These jacks are most suitable for gang operation. These jacks are operated with separate high-pressure handpump fitted with D. C. valve & high-pressure flexible hose pipes either NPT or BSP and fittings. Quick-change couplers & pressure gauges are optional. However these jacks can also be operated with Power Packs. These Jacks are ideal for heavy duty applications.

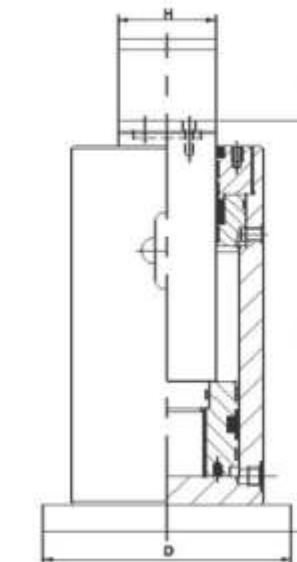
### BENEFITS / FEATURES

- Double Acting Operation
- Hydraulic return concept.
- Rated to full capacity.
- Quick Change Couplings provided.
- Available in custom stroke & sizes.
- Over pressurising protection on request.

**Capacity :** 10 to 1500 Tons

**Stroke :** Std. 150 mm or as per requirement

**Working Pressure :** 700 kg/cm<sup>2</sup>



## HLP SERIES

Cap. Ton	Model	Stroke (S) ± 5mm	Eff Area cm.sq	Oil. Cap CC	Closed Height (CH) ± 5mm	BODY DIA (D) ± 5mm	Ram Dia (H) mm	Approx. Weight in Kgs.	Hand Pump with DC valve
10	HLD-10/100	100	15.89	159.00	220	65	36	6	HP-12/1
	HLD-10/150	150		238.00	270			8	
	HLD-10/200	200		318.00	320			10	
20	HLD-20/100	100	31.15	311.00	220	80	45	9	HP-12/1
	HLD-20/150	150		467.25	270			11	
	HLD-20/200	200		623.00	320			10	
30	HLD-30/100	100	44.15	441.5	220	100	56	12	HP-12/3
	HLD-30/150	150		662.25	270			15	
	HLD-30/200	200		883.00	340			18	
50	HLD-50/100	100	78.50	785.00	225	130	80	22	HP-5012/5
	HLD-50/150	150		1177.50	275			28	
	HLD-50/200	200		1570.00	325			31	
75	HLD-75/100	100	113.09	110.00	275	150	90	36	HP-5012/5
	HLD-75/150	150		1696.00	325			40	
	HLD-75/200	200		2262.00	375			49	
100	HLD-100/100	100	153.86	1538.6	285	175	100	50	HP-5012/5
	HLD-100/150	150		2307.90	335			55	
	HLD-100/200	200		3077.20	385			65	
150	HLD-150/100	100	226.85	2226.80	310	215	130	80	HP-5012/5
	HLD-150/150	150		3402.90	360			90	HP-5012/5
	HLD-150/200	200		4537.00	410			105	HP-5012/13
200	HLD-200/100	100	314.16	3141.60	330	255	150	120	HP-5012/13
	HLD-200/150	150		4712.40	380			140	
	HLD-200/200	200		6283.20	430			160	
250	HLD-250/100	100	380.13	3801.30	340	285	170	155	HP-5012/13
	HLD-250/150	150		5701.90	390			175	
	HLD-250/200	200		6760.20	440			200	
300	HLD-300/100	100	452.39	4523.90	350	310	180	175	HP-5012/13
	HLD-300/150	150		6785.80	400			210	
	HLD-300/200	200		9047.80	450			235	
400	HLD-400/100	100	572.55	5725.50	375	350	220	260	HP-5012/13
	HLD-400/150	150		8588.20	425			300	
	HLD-400/200	200		11451.00	475			340	
500	HLD-500/100	100	706.86	7068.60	400	400	240	370	HP-5012/13
	HLD-500/150	150		1002.00	450			415	HP-5012/20
	HLD-500/200	200		14137.20	500			470	HP-5012/20
600	HLD-600/100	100	855.30	8553.00	420	430	270	450	HP-5012/13
	HLD-600/150	150		12829.50	470			500	HP-5012/20
	HLD-600/200	200		17106.00	520			550	HP-5012/25
800	HLD-800/100	100	1134.11	11341.10	455	510	300	650	HP-5012/20
	HLD-800/150	150		17011.60	505			760	HP-5012/25
	HLD-800/200	200		22682.00	555			800	HP-5012/30
1000	HLD-1000/100	100	1452.20	14522.00	485	560	350	870	HP-5012/25
	HLD-1000/150	150		21783.00	535			980	HP-5012/30
	HLD-1000/200	200		29044.00	585			1065	HP-5012/40
1500	HLD-1500/100	100	2206.18	22061.80	570	700	450	1675	HP-5012/30
	HLD-1500/150	150		33092.70	620			1800	HP-5012/40
	HLD-1500/200	200		44123.60	670			1965	HP-5012/50



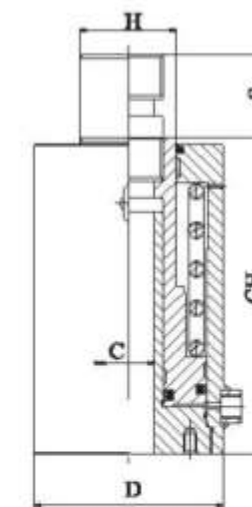
# WELL ENGINEERED

HRC & HDC series of hollow plunger hacks are versatile for use in tooling maintenance & tensioning applications. The HRC & HDC series design allows jacking screw, puller screw, cables, etc. to be extended through the ram. They can be used with a hydraulic puller set as well as a standard hydraulic jack. The HRC & HDC series have features being provided for easy mounting / installation. Like the hollow cylinder bodies are threaded or welded together for easy & quick interchangeable head inserts and tapped holes at the base for easy installation. The floating tubes are hard chrome plated which resist wear & increase the product life. HRC jacks are also available in a low profile, spring return ram type construction. The stroke are available as per individual requirements with large center holes for greater flexibility. The jacks are provided with quick change couplers. These jacks serve dual-purposes both for push & pull application.

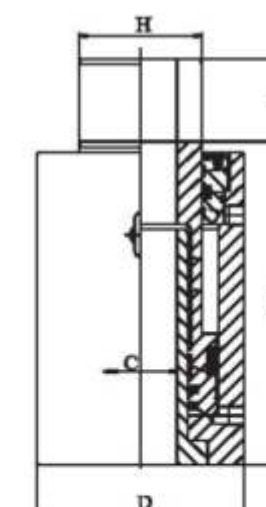
## BENEFITS / FEATURES

- Single Acting Spring return concept (HRC)
- Double Acting Hydraulic return concept (HDC)
- Plain plunger.
- Rated to full capacity.
- Hollow plunger design is ideal for pull and push application.
- Collar threads for fixturing is an option.

**Capacity :** 10 to 200 Tons  
**Stroke :** 75 mm - 100 MM  
**Working Pressure :** 700 kg/cm<sup>2</sup>



HRC - Series Single Acting  
Hollow Plunger Jacks



HRC - Series Double Acting  
Hollow Plunger Jacks

## HRC - Series Jacks

Cap. Ton	Model	Stroke (S) ± 5mm	Eff Area cm.sq	Oil. Cap CC	Closed Height (CH) ± 5mm	Centre Hole Dia (C) ± 2mm	BODY DIA (D) ± 5mm	Ram Dia (H) mm	Approx. Weight in Kgs.	Hand Pump
10	HRC-10	75	42.86	320	220	25	100	56	10	HP-12/1
20	HRC-20	75	34.34	258	230	31	100	60	12	HP-12/1
30	HRC-30	75	84.19	632	235	37	138	70	23	HP-12/3
50	HRC-50	100	120.69	1207	370	46	175	95	62	HP-5012/5

## HDC - Series Jacks

Cap. Ton	Model	Stroke (S) ± 5mm	Eff Area cm.sq	Oil. Cap CC	Closed Height (CH) ± 5mm	Centre Hole Dia (C) ± 2mm	BODY DIA (D) ± 5mm	Ram Dia (H) mm	Approx. Weight in Kgs.	Hand Pump
30	HDC-30	75	43.98	330	240	33	115	76	16	HP-5012/5
50	HDC-50	100	72.69	727	305	42	145	90	30	HP-5012/5
100	HDC-100	100	169.88	1700	330	52	200	130	70	HP-5012/5
200	HDC-200	100	302.38	3025	380	77	280	180	160	HP-5012/13



- The specifications may be altered as per individual needs.
- Repair kits & seal are available for all models.
- Subject to change without notice.



## COMPACT & STURDY

The HHJ / HFJ series flat jacks offered by Hydropack India are no match for low profile & spring return type. Where brute force in a compact unit is required the HHJ / HFJ series is preferred. Maintenance crew prefers these jacks for their rugged construction & portability with a maximum power to use in confined spaces where other jacks don't fit. This lightweight low profile design is ideal for use where clearance is limited.

These jacks are operated with a separate high-pressure hand pump model HP-12. High pressure flexible hose pipe either NPT or BSP end fittings, quick-change couplers & pressure gauges are optional. Each HFJ flat series jacks have a special provision of clamping at the base.

Hydraulic Jacks HHJ / HFJ are used for lifting & leveling complete flyover segments for exact positioning.

### BENEFITS / FEATURES

- Ram plain.
- Plunger wiper.
- Spring return concept.
- Rated to full capacity.
- Unique resist side load.
- Clamping mechanism for HFJ Series.
- Compact construction for height-spot lifting.
- Ideal for clamping or positioning jobs where space is criteria.

Capacity : 10 to 100 Tons

Stroke : 6 mm - 15 MM(HHJ) 30mm - 57 mm(HFJ)

Working Pressure : 700 kg/cm<sup>2</sup>



Flat Jacks HFJ



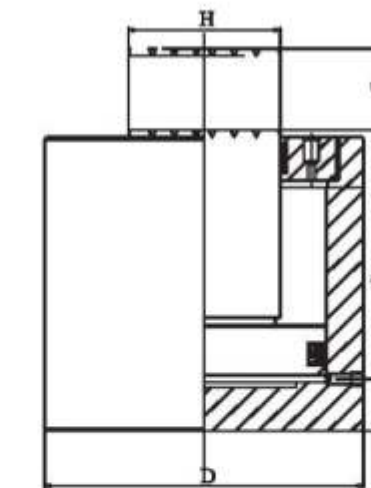
Low height Jacks HHJ

### HHJ - Series Jacks

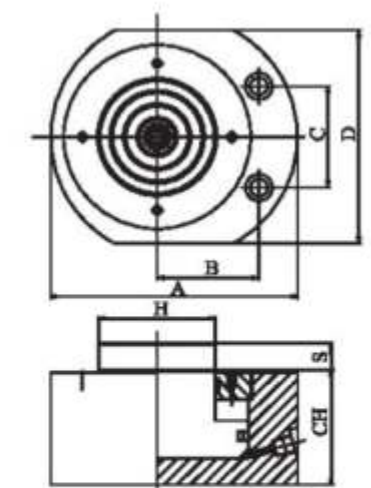
Cap. Ton	Model	Stroke (S) ± 5mm	Eff Area cm.sq	Oil. Cap CC	Closed Height (CH) ± 2mm	BODY DIA (D) ± 3mm	Ram Dia (H) mm	Approx. Weight in Kgs.	Hand Pump
10	HHJ-10	38	15.89	48	90	70	38	2.5	HP-12/1
20	HHJ-20	45	33.18	146	100	95	50	5	HP-12/1
30	HHJ-30	62	50.24	312	120	110	60	8	HP-12/3
50	HHJ-50	60	78.50	471	122	130	80	12	HP-3012/2
100	HHJ-100	57	154.00	877	153	175	100	21	HP-3012/2

### HFJ - Series Jacks Heavy Duty Flat Jacks

Cap. Ton	Model	Stroke (S) ± 5mm	Eff Area cm.sq	Oil. Cap CC	Closed Height (CH) ± 2mm	BODY DIA (D) ± 3mm	Ram Dia (H) mm	Approx. Weight in Kgs.	Hand Pump	Flat Size (A) mm	B	C	E	Hand Pump
10	HFJ-10	10	15.90	16	45	85	38	1.6	HP-12/1	60	34	37	7	HP-12/1
20	HFJ-20	10	28.26	29	52	100	50	2.9	HP-12/1	80	42	50	10	HP-12/1
30	HFJ-30	10	44.50	45	60	120	50	3.9	HP-12/1	100	50	52	10	HP-12/1
50	HFJ-50	15	78.55	107	70	140	58	6.5	HP-12/1	120	54	67	11	HP-3012/2
100	HFJ-100	15	154.00	215	86	182	85	14.2	HP-12/1	160	75	76	13	HP-3012/2



HHJ - Series, Heavy Duty Low Height Jacks



HFJ - Series, Heavy Duty Flat Jacks

- The specifications may be altered as per individual needs.
- Repair kits & seal are available for all models.
- Subject to change without notice.



## EXCELLENT QUALITY

Hydropack India offers HBT series of Hydraulic Bolt (Stud) Tensioners specially designe and custom built most widely used, as they are compact & economical.

To clamp together the components of a bolted joint the bolt or stud must be stretched or loaded like a powerful spring to get the necessary forces on the components. The correct load or controlled stretch is critical as incorrect loading can cause bolt fracture and joint failure. TORQUE is the traditional method of providing stretch with the spanner using the thread to stretch the bolt maximum the torquing effort is wasted in overcoming friction. To avoid all these problems Hydropack's HBT series are the most suitable equipment. They are detachable and easy to handle too.

Used for Turbines, Boilers, Bowl, Mills, Construction Sites, Ship Yards, etc. Simultaneous Multiple Tensioning Equipment for Stream Generators, Boiler Flange.

### BENEFITS / FEATURES

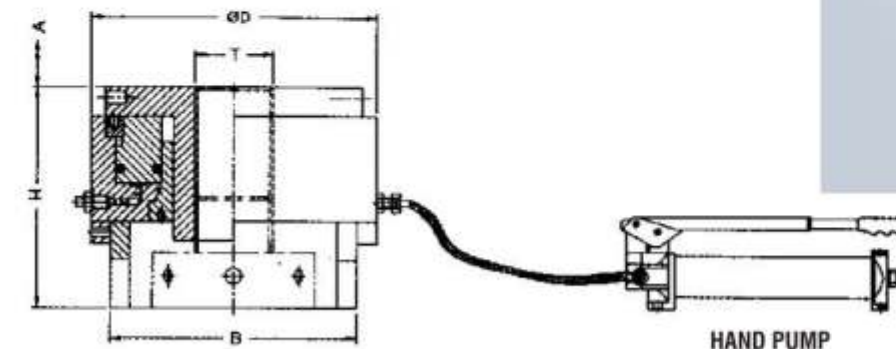
- Single Acting operation.
- Compact & easily detachable.
- Quick change couplings provided.
- Rated to full capacity.
- Can be used with any of the HP series of hand pump.



Size : M16 - M150

Stroke : 5 to 25 mm

Working Pressure : 1250 kg/cm<sup>2</sup>



### HBT - Series Bolt Tensioners

MODEL NO. / Order No.	UNIT	HBT01	HBT02	HBT03	HBT04	HBT05	HBT06	HBT07
Capacity	Tonnes	23	41	38	30	70	70	200
Working Pressure	Kg/cm <sup>2</sup>	430	565	710	500	750	700	430
Closed Height	'H' mm	145	310	155	200	170	200	350
Stroke	'A' mm	6	10	6	6	5	15	25
Body Diameter	'D' mm	140	160	150	170	197	200	350
Threading Size	'T' mm	M 36X4	M 39X3	M 42X3	M 56X5.5	M 68X6	M 72X3	M 140X4
Bottom Ring Dia	'B' mm	90	110	105	150	130	170	240



Simultaneous multiple tensioning equipment for stream generators, boilers flanges for turbine, boilers, bowl mills, construction sites, etc

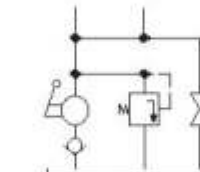
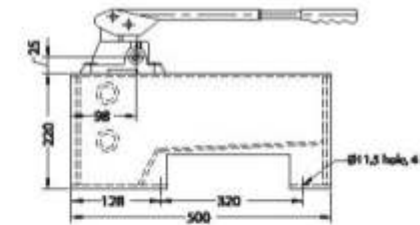
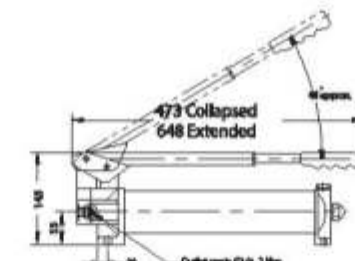
- The specifications may be altered as per individual needs.
- Repair kits & seal are available for all models.
- Subject to change without notice.



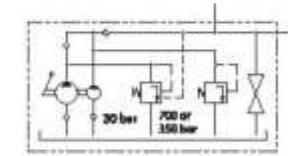
- Heavy duty Construction.
- Hardened & ground piston.
- Light weight & easy to carry.
- Reduced operator fatigue.
- Integral Relief & Release valves.
- Renewable Delivery, Relief & Release valve parts.
- Adjustable relief valve for different pressure settings.
- Collapsible hand lever for compact size to meet individual needs.
- Easy to use / built to last.
- Maximum versatility.
- Lowest hand effort.
- 1/4" BSP outlet parts.



MODEL NO.	UNIT	HP - 10"	HP - 12	HP - 16	HP-3012	HP-5010	HP-5012	HP-5016
Volume discharge per stroke at low pr.	c. c.	-	-	-	15	49	49	49
Volume discharge per stroke at high pr.	c. c.	1.5	2.8	5.0	2.2	2.2	2.2	2.2
Maximum working pressure	Kg/cm <sup>2</sup>	1250	700/1000	350	700	1000	700	350
Oil Tank Capacity	litres	-	1,2,3	1,2,3	1,2,3	5.13	5.13	5.13
Outlet port size	BSP	1/4"	1/4"	1/4"	3/8"	1/4"	1/4"	3/8"
Tank displacement	litres	-	0.9,1.8,2.7	0.9,1.8,2.7	0.9,1.8,2.7	4.11	4.11	4.11
Weight (without oil) approx.	Kg.	-	8.7	8.7	9.8	28	28	28



**Hydraulic Symbol**



### Hydraulic Symbol

- 34



## OUTSTANDING PERFORMANCE

Hydraulic 'ALIGNERS' A device, which is a backbone of the Ship Building Industry, has been designed, developed & successfully manufactured first time in India by Hydropack (India) Pvt. Ltd., Belgaum. It has been proven for its performance and efficiency in most of the advanced Shipyards of our country.

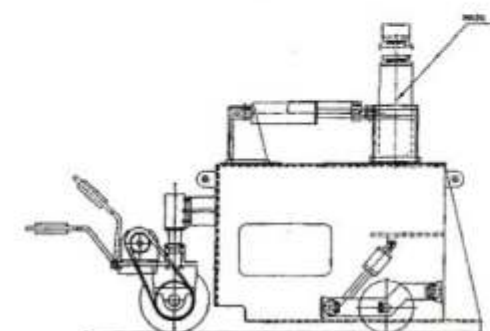
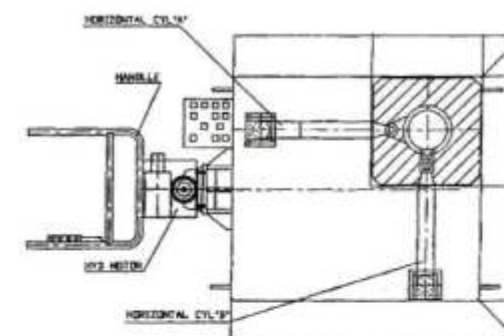
### GENERAL CHARACTERISTICS

- It eliminates the combine use of traction Engines, Rollers, Jacks, Winches etc. that are used in moving/aligning heavy structures like the HULLBLOCKS.
- The equipment may be used for Heavy-duty construction handling, complicated work of bulk structure alignment. Bridge & building construction as effectively as in ship building.
- Its user friendly controls result in labour saving with increased efficiency & improved production capability with high level of precision accuracies.
- The ALIGNERS structure is mounted on wheels and comes with hydraulic power drive for easy mobility.
- It has world class and high quality components for long life and better accuracies so as to prolong maintenance.

**Capacity :** 25 to 300 tons

**Stroke :** 250 to 300 mm

**Moving Range of Jack Center :** 250 X 250 mm



### ALIGNERS ADVANTAGE

- The positioning of hull block by ALIGNERS results in improved accuracy of Hull alignment within no time.
- Large sized unit block such as bottom shell, side shell, bullhead, stern can be moved easily to the desired position.
- Fitting works & removing packings for jacking and guiding may be eliminated with use of ALIGNERS.
- The stock requirement for blocks is reduced allowing to utilize the ALIGNER more effectively.
- ALIGNERS allow the assembling & mounting processes advance smoothly; the peak requirement of manpower immediately after launching is reduced.
- Increase in efficiency of erection work, when used for pre erection work. The Efficiency erection work can be improved because of easy fitting.
- The works for pre-erection, fitting & erection can be executed by eliminating the use of crane when ALIGNERS are used in combination with traveling carrier.

### CONSTRUCTION FEATURES

- The ALIGNERS has a base along with built in Power Pack unit. There is a hydraulic jack and two horizontal cylinders mounted on the base.
- The main hydraulic jack is of double acting type. The hydraulic jack is fitted with special anti friction materials at bottom of jack. The coefficient of friction is as low as (0.030.06).
- This allows moving the heavy objects placed on it over a stainless steel plate in any direction by the means of the horizontal cylinders.
- The user compatibility & its ease make these ALIGNERS one of its kind and these can be manufactured depending upon the purpose to be served & the operating conditions.

	HHT 25	HHT 40	HHT 100	HHT 200	HHT 300
<b>Main Jack</b>	25t (200kg/cm.sq)	40t (200kg/cm.sq)	100t (200kg/cm.sq)	200t (200kg/cm.sq)	300t (200kg/cm.sq)
Max-lifting					
Force Pressure					
Lifting Stroke	250 mm	250 mm	300 mm	300 mm	300 mm
Moving Range of Jack Center	250 X 250 mm	250 X 250 mm	250 X 250 mm	250 X 250 mm	250 X 250 mm
<b>Horizontal Cylinders</b>					
Pushing Force (pressure)	5t (200kg/cm.sq)	15t (200kg/cm.sq)	27t (200kg/cm.sq)	45t (200kg/cm.sq)	42t (200kg/cm.sq)
Pulling Force (pressure)	3t (200kg/cm.sq)	10t (200kg/cm.sq)	19t (200kg/cm.sq)	35t (200kg/cm.sq)	33t (200kg/cm.sq)
<b>Travelling of Main Body</b>					
Prime mover travelling	Hydraulic Motor	Hydraulic Motor	Hydraulic Motor	Hydraulic Motor	Hydraulic Motor
Speed (approx)	0-20 m/min (approx)	0-20 m/min (approx)	0-16 m/min (approx)	0-20 m/min (approx)	0-20 m/min (approx)
<b>Operation Mode</b>	By Push Button	By Push Button	By Push Button	By Push Button	By Push Button
<b>Hydraulic Unit</b>					
Motor	2.2kw X 440v	2.2kw X 440v	3.7kw X 440v	5.5kw X 440v X 6p	5.5kw X 440v X 6p
<b>Pump Delivery</b>					
At High Pressure	200 kg/cm.sq X 5.7 lpm	200 kg/cm.sq X 5.7 lpm	210 kg/cm.sq X 6.0 lpm	225 kg/cm.sq X 5 lpm	240 kg/cm.sq X 5 lpm
At Low Pressure	200 kg/cm.sq X 5.7 lpm	200 kg/cm.sq X 5.7 lpm	110 kg/cm.sq X 14.5 lpm	70 kg/cm.sq X 31 lpm	70 kg/cm.sq X 31 lpm







## HYDRAULIC CYLINDERS

# MULTIPURPOSE HIGH FUNCTION

Hydropack India manufactures all types of Hydraulic Cylinders with various designs for many applications & different features with custom options in order to meet the customer's special requirement such as :

- Double Acting Cylinders
- Single Acting Cylinders
- Telescopic Cylinders
- Piston Accumulators
- Large Bore Up to 600 mm
- Long Stroke Up to 5000 mm
- Custom Designed Rod Ends
- End Of Stroke Cushioning
- Special Ports And Manifolds
- Variety Of Fittings And Piping
- Custom Valve Manifolds
- Control Valves
- Protective Guards
- Stroke Sensors And Position
- Special Piston Designs
- Special Seal Materials
- Special Paints and Coatings
- Corrosion Resistant Materials

Widely preferred by shipyards, Steel mills, Construction sites, Heavy Engineering, Offshore, Earthmoving equipments, Civil construction sites, Infrastructure, Power generators, Heavy Engineering equipment manufacturers.

Hydraulic DA cylinders are applied in the construction of offshore platforms & oil rigs.





## Hydropack's Special Purpose Machines for Indian Railways & Metros



40 T Bogie Test Stand installed at DMRC Sarita Vihar & Mundka Depot



50 T Bogie Testing Machine installed at Medha Servo for Train-18 Bogie Testing



Bolster Press 50 T Capacity



Hanger Press for Indian Railways



Synchronised 10T X 8 whitening jacks exported to South Africa railways



Coil Molding Machine for Indian Railways for Coils Siemens, 6 FRC



## Hydropack's Special Purpose Machines for Indian Railways & Metros



Hydraulic Puller for removing & fitting of CTRB Bearings in railways



Synchronized Pit Jacks of 15 T X 4



Hydraulic Bolster Press 30 T Capacity



Hydraulic Shell Moulding Machine



Hydraulic Two Station Quenching Press 150 T Capacity



Hydraulic Cylinder of 2 Mtr. stroke under Testing



## Hydropack's Special Purpose Equipments for Construction Sector



Hydraulic Double Acting Jack of 600 T Capacity supplied at Vietnam Site



Hydraulic Double Acting Support Jack of 100 T Capacity supplied at Ghana Site



Hydraulic Double Acting Pre-Tensioner Jack of 500 T Capacity supplied at Maldives Site



Hydraulic Double Acting Stressing Jack 650 T Capacity



Hydraulic 600 T Double Acting Jack for Pile Testing



Hydraulic Power Packs 3 HP to 10 HP



## Hydropack's Special Purpose Equipments for Construction Sector



Hydraulic Double Acting Jack of 400T Capacity with Power Pack for bridge lifting application.



Hydraulic Double Acting Multiple Stressing Jack of 700T Capacity



Hydraulic Jacks for launching girder.



Hydraulic Support Jacks for launcher



Hydraulic Jack for load testing of concrete slippers



Hydraulic Single Acting Jack of 1500T capacity X 4 for pile load testing.



## DEVELOPMENTS & TRANSCEDENCE

In this period of takeoff, fast growing India is demonstrating its strength of rise to the world. We at Hydropack India have the profound industrial essence & accumulated advantages resources put us on a par with advanced world enterprises in R & D, Manufacturing Assemble test & Quality assurance.



Hydraulic Cylinders and Powerpack for Synchronized Operation exported to Oman



Torque master (Linear actuators for tyre plants)



Brake Jack Assembly for Hydro Generators / turbines



Special Purpose Hydraulic Horizontal C Type Press for Defence



Scissor Lifts



Track Link pin press for Earth moving / Mining equipments



Hydropack's outstanding execution, passionate work & constant innovation for new results.



Hydraulic 400 T Stator Core Pressing Machine



Hydraulic 700 T Pole Coil Hot Press exported to Turkey



Hydraulic 400 T Deep Draw & Blanking Press



Hydraulic Bolt Tensioner



900 ton Cap. Plate bending Press



300 ton Cap. Portal Press for 3D plate bending



## DEVELOPMENTS & TRANSCEDENCE



1000 ton Capacity Dish End forming press



Heavy duty Hydraulic Cylinders



Power Pack 3000 Ltrs. tank fitted with Electric Motors 215 HP x 4



Special purpose Hydraulic cylinders



600 ton Cap. Closed Frame Press with moving trolley



## OUR STATE OF THE ART MACHINING FACILITY



Hydraulic 1000 Ton Cap. Cylinder under testing



Honing Machine Dia 900mm X 1500 mm



ID honed cylinder



80mm cap. Radial drilling machine



Solid bar boring (sheave) facility



8 mtrs long & DIA upto 1.5 mtrs Admit between centre Lathe



## OUR OTHER PRODUCTS



Hydraulic 200 T Roll Bed Press for Press / Remove shaft from the Gear & Press Bearings



Battery of Presses with one Power pack & multiple presses for Indica components moulding at TELCO's ancillaries



250 T Capacity Closed Frame Moulding Press



Hydraulic Jacks in a gang with Power pack for PSLV Launching at Shriharikota ISRO



Hydraulic Press of 100 T capacity for Rotor Pressing



Hydraulic Rubber Moulding Press with sliding table, ejector Ram, PLC fitted



## OUR OTHER PRODUCTS



Roll Bed Presses for Electric Motors maintenance & manufacturing units  
Capacity 100 T - 500 T Table sliding by Chain Mechanism. Hydraulic stroke upto 1 Mtrs. or even more. Ideal for Electric Motor shaft removing & fitting



Four Pillar type Tie-Rad construction Hydraulic Press for Special Applications



High Precision Servo Motors



Hydraulic Press of 1200 T Cap. For Clamping Stators.



Stators Clamping Press  
Capacity 500 T



Hydraulic Press for clamping stators  
of 1600 T Capacity







# OUR MAJOR CLIENTS





For further details contact :



**Regd. Office & Works :**

Plot No. 19, Sy. No. 323, Majgaon Industrial Area,  
G.I.T. College Road, Udyambag, Belgaum - 590 008, India

**Unit II :**

Plot No. 64 (Part), Sy. No. 536, Honga Industrial Area,  
Honaga, Belgaum - 590 010.

Phone : 0831 - 2442559, 2442857, 2440524

Fax : 0831 - 2442658

E-mail : [snd@hydropackindia.com](mailto:snd@hydropackindia.com)

Web : [www.hydropackindia.com](http://www.hydropackindia.com)

**Regional Distributor / Representative**

--

